



## 3 Bushy Close, Oxford, OX2 9SH

£1,995 - 25th August 2025.

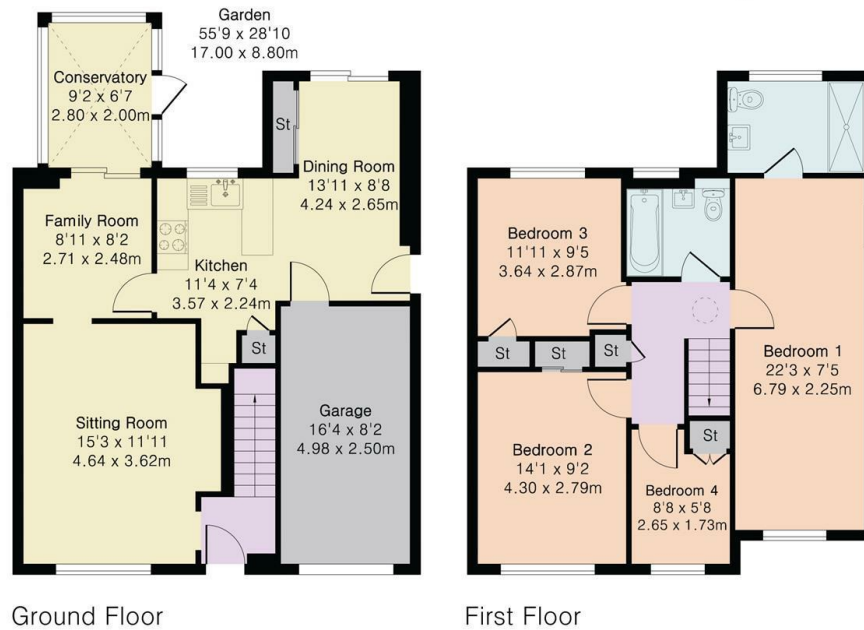
- Four bedroom detached
- Two bathrooms
- Garage and off street parking
- Council Tax Band E
- Fully furnished so would suit visiting academic family
- Conservatory
- Mains gas, electricity and water
- Three reception rooms
- Gas CH
- EPC rating C

**Approximate Gross Internal Area 1343 sq ft - 124 sq m  
(Including Garage)**

Ground Floor Area 575 sq ft – 53 sq m

First Floor Area 634 sq ft – 59 sq m

Garage Area 134 sq ft – 12 sq m



## Directions

## Viewings

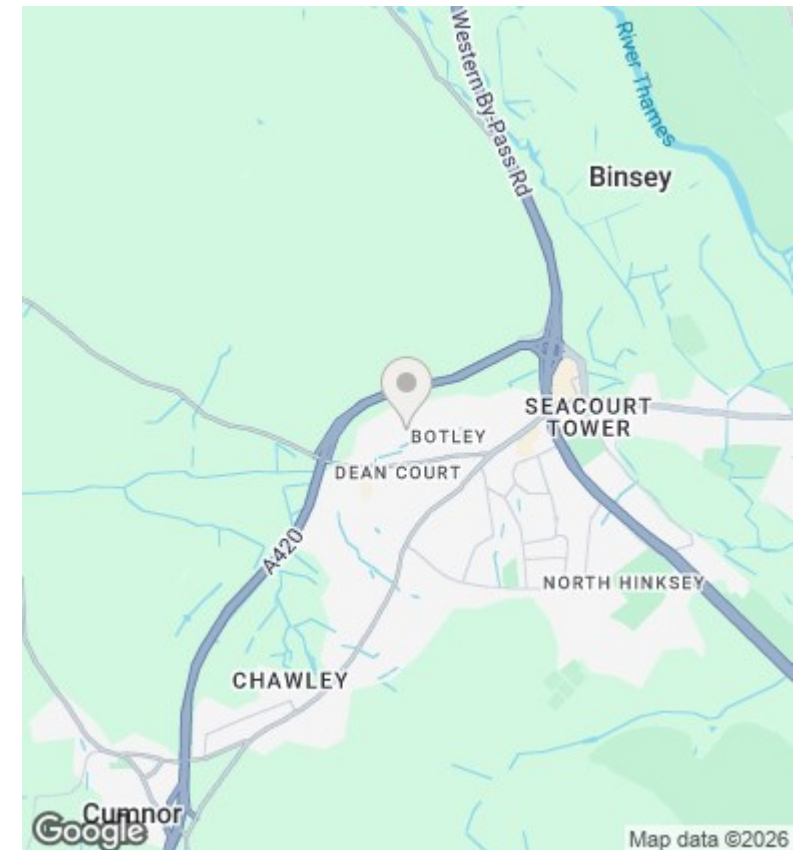
Viewings by arrangement only. Call 01865 515900 to make an appointment.

## Council Tax Band

E

## EPC Rating:

C



Energy Efficiency Rating		
	Current	Potential
Very energy efficient - lower running costs		
(92 plus) <b>A</b>		
(81-91) <b>B</b>		<b>83</b>
(69-80) <b>C</b>	<b>70</b>	
(55-68) <b>D</b>		
(39-54) <b>E</b>		
(21-38) <b>F</b>		
(1-20) <b>G</b>		
Not energy efficient - higher running costs		
<b>England &amp; Wales</b>	EU Directive 2002/91/EC	